



# PACIFIC DOMES™

## 8ft. 2v Climbing Dome

### Owners Setup Manual

*Please read the entire instruction manual before assembling your dome.*



**PACIFIC DOMES, Inc.**

PO Box 1047 • Ashland, OR 97520 • (888) 488-8127 • [www.PacificDomes.com](http://www.PacificDomes.com)

# Climbing Dome Frame Instructions

## You will need :

- a couple of friends
- a couple of ladders
- a couple of 9/16" wrenches\*
- Hex Key wrench or hex key adapter for drill or screwdriver\*

\*Ratchet wrenches and a screwdriver with a for a hex key bit adapter will make the job easier, but normal wrenches will work fine as long as you have a hex key wrench for the top of the bolt. A drill with a 9/16" socket tip will speed things up.

**In this kit you will receive:** 30 'A' struts  
35 'B' struts

## Marking the struts:

The climbing dome frame has 65 struts in 2 different lengths. Each strut is marked with a letter 'A' or 'B' at one or both ends. To help make it clearer as you are erecting the frame, mark each strut with the provided stickers. Put the sticker in the middle of each strut facing the inside of the dome. Double check each strut as you put up the frame.

## **Assembly:**

Start at the bottom, bolting the struts together as you go. Complete each row before you move up to the next. Do not tighten the bolts until the entire frame is together because you will be unbolting and adding more struts. We find this much easier than trying to bolt all the struts on at once. Place the upper struts to the outside of the bolt. To avoid bending the strut ends, let the upper struts hang down until you are ready to add to them.

**Some people find it easier to set up by just following the frame diagram.**

# Child Safety Hardware Instructions

- Assemble the dome frame as indicated in the assembly portion of the owner's manual.

**For 5 strut hubs use only:**

7/8" Button Headed Socket Cap Screw (BHSCS)

**For 6 strut hubs use only:**

1" Button Headed Socket Cap Screw (BHSCS)

- Locate "T" nuts on inside face of hubs and screw the BHSCS in from the outside of dome.



**It is very important that the guidelines above be followed to avoid injury from exposed bolt threads!**

- BHSCS should be tightened until threads are flush with face of "T" nuts
- We also suggest that you use Loctite Red Threadlock to prevent accidental loosening of the bolts over time!

**Included in Hardware Pack:**

**Safety Hardware**

(20) 7/8" BHSCS

(15) 1" BHSCS

(30) "T" Nuts

(2) 7/32" Hex Wrenches

## **Alternative Frame Build Method**

In addition to barrel nut and button head socket cap screws, we have shipped extra nuts and bolts with longer shanks. We found that assembling domes with safety hardware can be difficult; as a result, we encourage you to use the longer bolts initially to get the frame together then exchange the hardware hub by hub.

- Assemble the dome frame as indicated in the assembly portion of the owner's manual using the 3/8"-16X1 1/4" fully threaded tap bolts and 3/8"-16 serrated flange nuts.
- Once the dome is assembled, replace the temporary hardware for the Child Safety Hardware. Replace hardware one hub at a time by tightly clamping the flanges of the hub together using vise grips or clamps. (Make sure the clamps are holding the hub stack together securely as it can present a hazard if they suddenly release from the clamps).
- Temporary hardware will be replaced with 7/8" Button Headed Socket Cap Screw (BHSCS) or 1" Button Headed Socket Cap Screw (BHSCS) depending on if the individual hub is comprised of 5 or 6 struts.

### **Included in Hardware Pack:**

#### **Temporary Hardware**

(30) 3/8"-16 Serrated Flange Nuts

(30) 3/8"-16 x 1 1/4" Fully Threaded Tap Bolts

(60) 3/8"x1 1/4" Fender Washers (powder coated domes only)

## **Completed Hub with Safety Hardware**



**Hub View from Inside of Dome**



**Hub View from Outside of Dome**

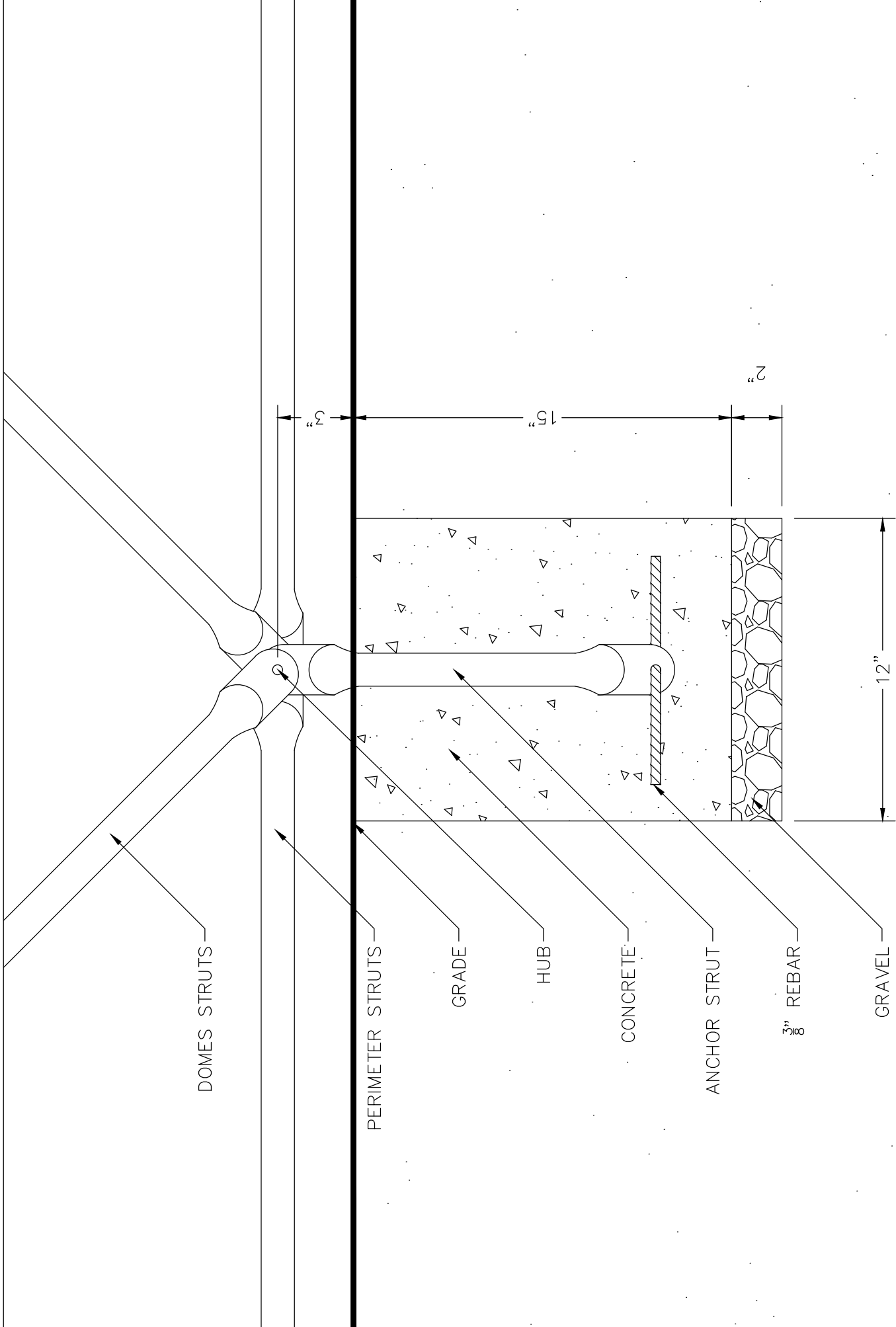
## **Frame Anchoring – Before Frame is Built with Perimeter Plan Option 1**

1. Stake center of Dome
2. Mark hole locations as indicated on perimeter plan
3. Dig a 12" Diameter hole about 17" deep at the marked hub locations
4. Fill bottom 2" with gravel, tamp down
5. Insert anchor strut with rebar into each hole
6. Assemble bottom row of dome frame and anchor struts above each hole
7. Measure the distance to each hub from the center of the dome
8. Level the bottom row of struts with strut hole 2" above ground
9. Double check your measurements
10. Brace all components before back filling
11. Back fill the holes with concrete
12. Recheck all strut positions for accuracy
13. Let concrete cure for 24-48 hours
14. Build the remainder of the dome on top of base row struts

## **Frame Anchoring – After Frame is Built with Braces & Markers Option 2**

1. Build dome frame in desired location
2. Mark bottom hub locations for concrete holes
3. Move dome
4. Dig 12" diameter holes 17" deep at the marked locations
5. Move the dome back to the original position with hubs centered over the holes
6. Install anchor struts and rebar
7. Level dome
8. Back fill holes with concrete
9. Let concrete cure for 24-48 hours

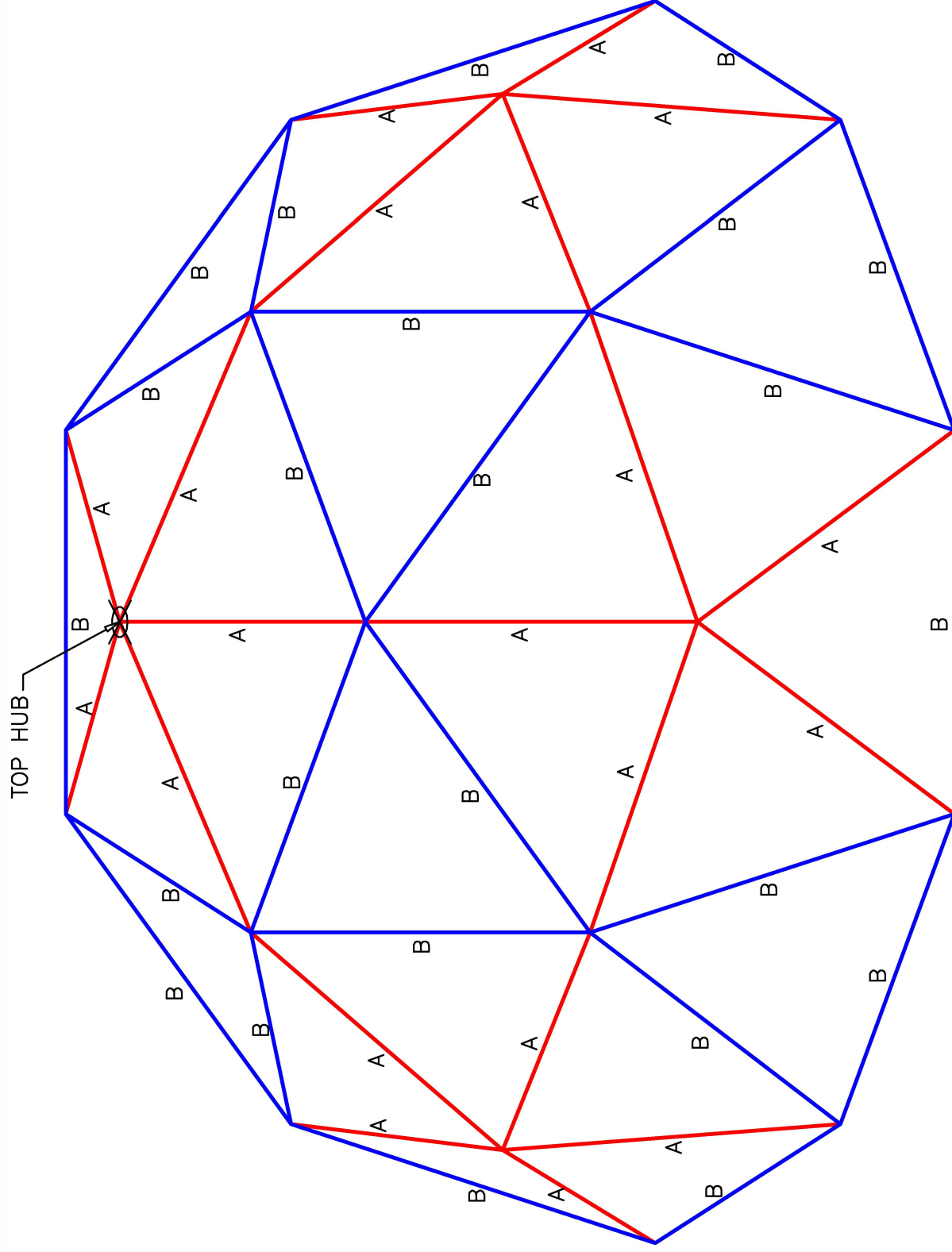
**☆ Refer to Following Diagram ☆**



**PACIFIC DOMES®**  
 585 CLOVER LANE STE. 3, ASHLAND OR, 97520  
 OFFICE: 541.488.7737 FAX: 541.482.4272

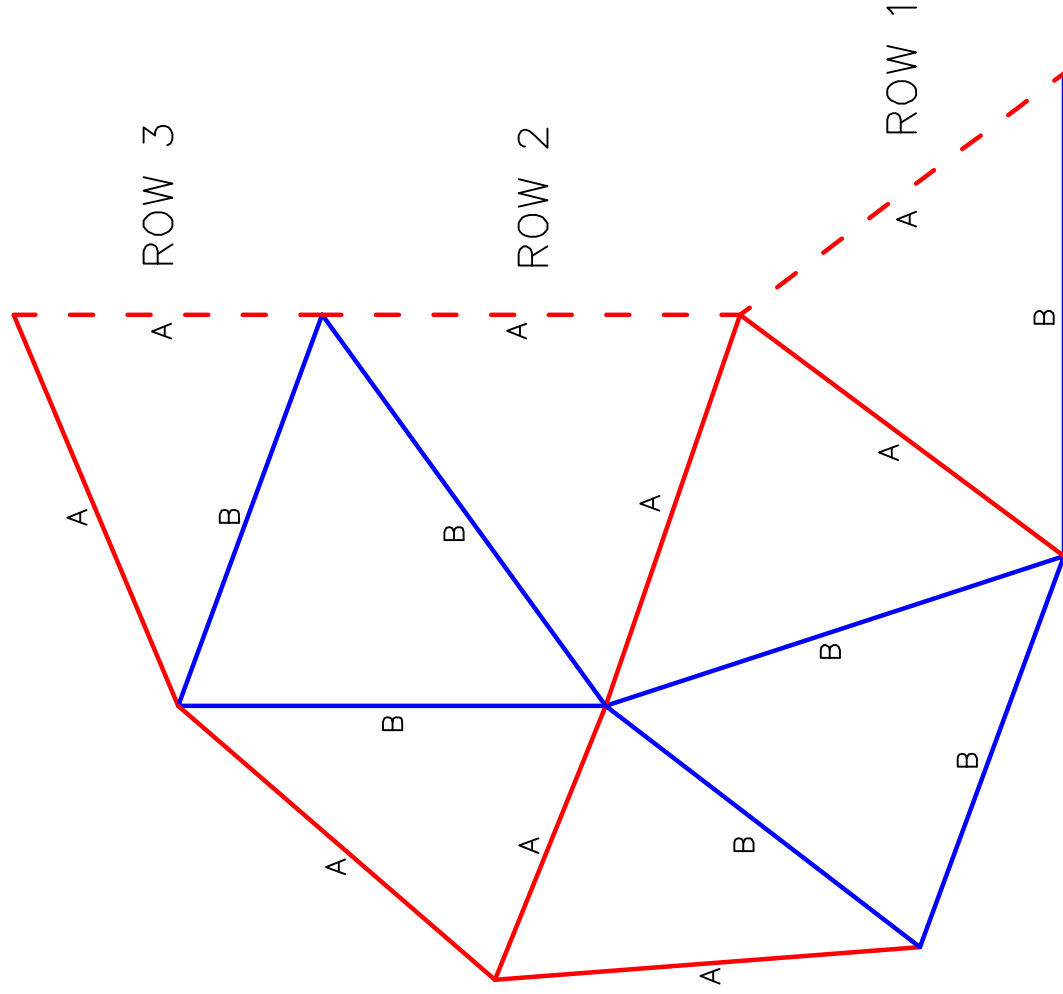
DRAWING TITLE:	PLAYGROUND DOME FOOTING	DRAWING NUMBER:	SI-88	DATE:	09/05/2018
DESCRIPTION:	CONCRETE WITH VERTICAL STRUT & REBAR	REVISION:	-	DRAWN BY:	NOT
THIS DOCUMENT CONTAINS PROPRIETARY INFORMATION AND IS THE PROPERTY OF PACIFIC DOMES. NO PART OF THIS DOCUMENT MAY BE REPRODUCED OR TRANSMITTED IN ANY FORM OR BY ANY MEANS, ELECTRONIC OR MECHANICAL, WITHOUT THE WRITTEN PERMISSION OF PACIFIC DOMES. ANY OTHER USE OF THIS DOCUMENT WITHOUT THE PERMISSION OF PACIFIC DOMES IS PROHIBITED BY LAW.					





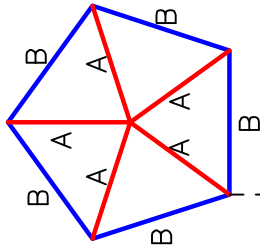
8' DOME FRAME DIAGRAM



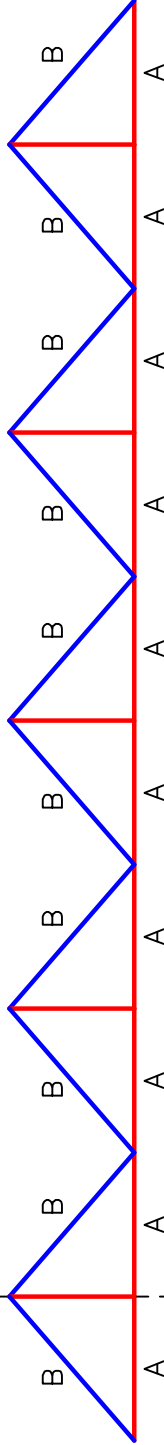


8' PRESCHOOL DOME FRAME DIAGRAM  
 THIS PATTERN REPEATS ITSELF FIVE TIMES.  
 NOTICE THAT THE OUTSIDE EDGES OVERLAP.

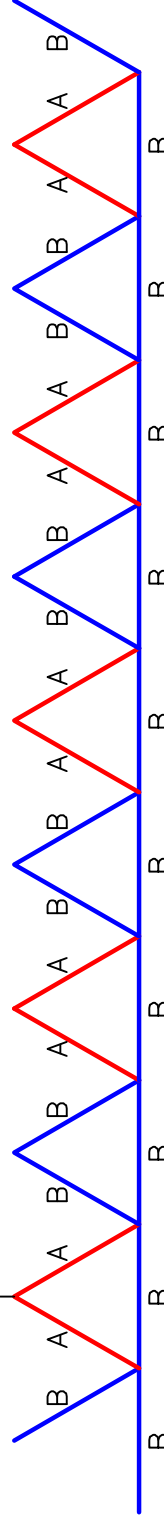
# 8 FOOT PRESCHOOL DOME FRAME – ROW BY ROW



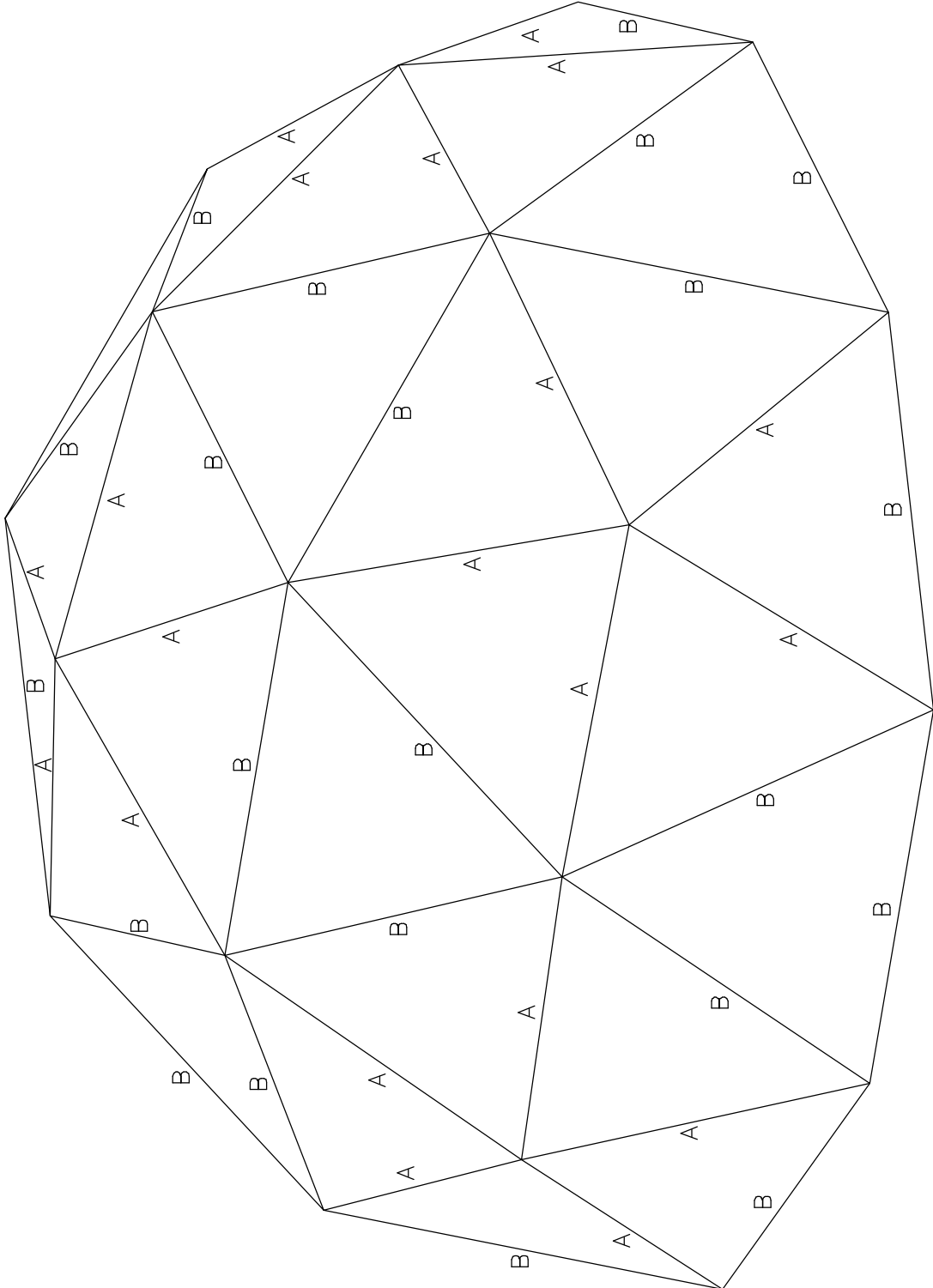
TOP:



SECOND ROW:



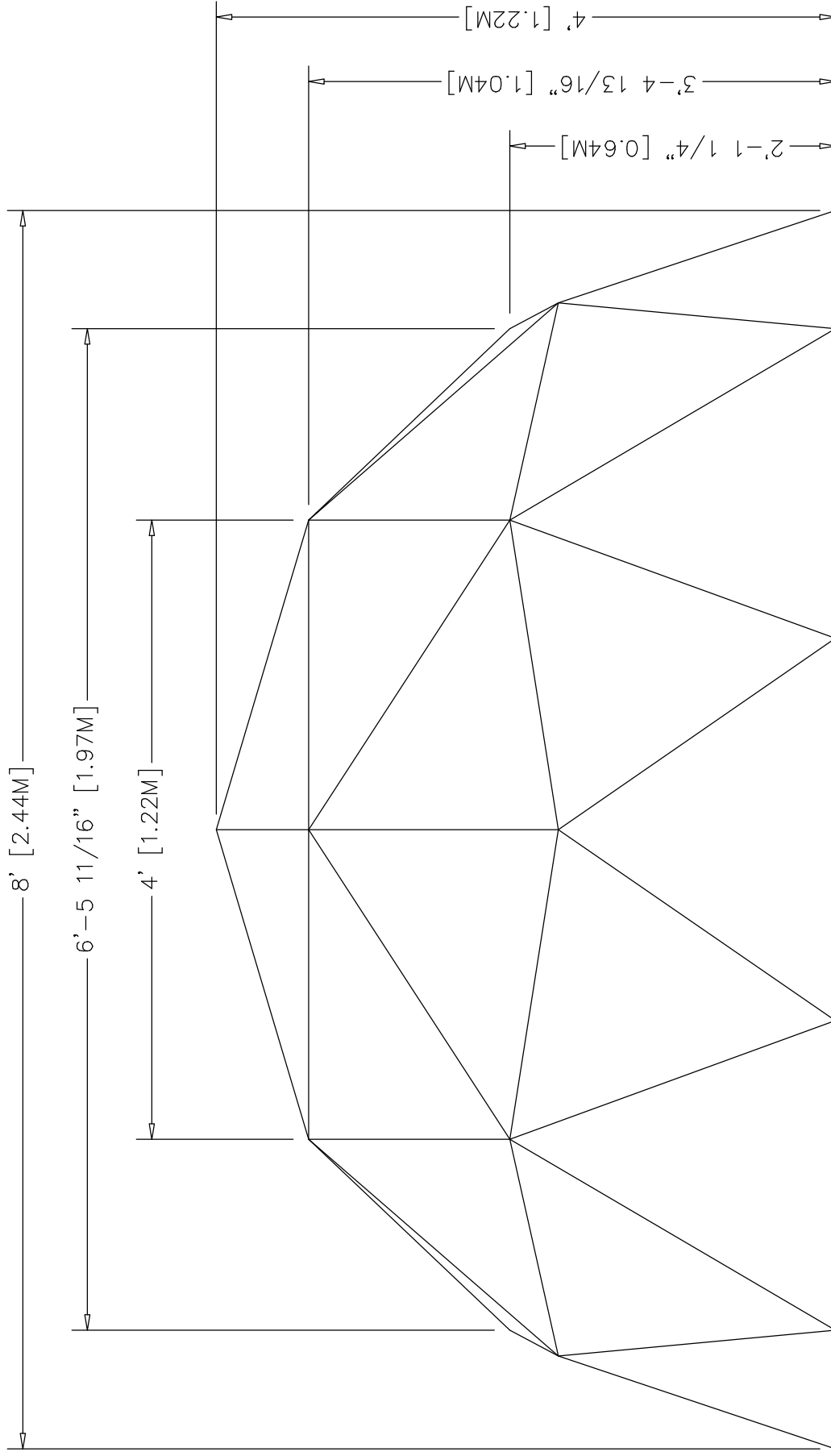
FIRST ROW:



8' PRESCHOOL DOME FRAME

THIS DOCUMENT CONTAINS PROPRIETARY INFORMATION FROM PACIFIC DOME. ANY REPRODUCTION, DISTRIBUTION, SALE, OR OTHER USE OF THIS DOCUMENT WITHOUT THE PERMISSION OF PACIFIC DOME IS PROHIBITED BY LAW.

PACIFIC DOME	DRAWING NAME: 8' PRESCHOOL DOME	DRAWING NUMBER: SD-08-05	DATE: 16 JUN 2010	DRAWN BY: TES	PAGE: 1 OF 1	REV: —
--------------	------------------------------------	-----------------------------	----------------------	------------------	-----------------	-----------



## 8' PRESCHOOL DOME ELEVATION