



HIGHER **FREQUENCY**



24ft (7m) Dome**Home**

Geodesic Dome Homes by Pacific Domes! We build affordable, “out of the box” Geodesic Dome Houses, the strongest housing alternative!

Ecological Home Design dwellings are our forte, and many of our Dome Shelters are used as Eco-Resort dwelling places, and Home Construction Developers looking to construct environmentally conscious and sustainable housing solutions.

A Geodesic Dome Home can hold snow, wind and rain with the best designs in architecture. Environmentally conscious home owners, Eco-resorts and Glamping Retreats incorporate our Dome Houses because they are the strongest structure known to man. Our insulation, wood stove and climate control options make them a shelter for all seasons.



24ft Dome Home, Canada



24ft Dome Home, Nebraska



24ft Dome Home, Nebraska



24ft Dome Home, Canada



24ft Dome Home, Canada



24ft Dome Home, CA



24ft Dome Home, UK

24ft (7m) Dome

Size & Weight

Floor Area: 426 sq.ft. (40 sq.meters)

Ceiling Height: 14.25 ft. (4.3 meters)

Dome Weight: 1,125 lbs. (510 kg.)

Bay Window: 8ft. 6in. h x 20ft. w (2.6×6 meters)

Frame Package: 66" x 28" x 20" (1.7 x .7 x .5 meters)

Cover Package: 40" x 40" x 35" (1 x 1 x .9 meters)

Engineering

No. of Struts: 165

Frequency: 3

Max Wind w/ No Snow: 100mph

Max Snow w/ Wind Load: 20lbs @130mph

Assembly

Assembly Time: 4 to 12 hours with crew of 3 or 4

Required Equipment: 8' A- Frame Ladder, 12' Material Lift

Dome Home Package Includes

Frame: Standard 1.3" galvanized steel frame with hardware

Cover: Shelter cover with bay window

Doors: Weather-tight door or pre-hung door opening

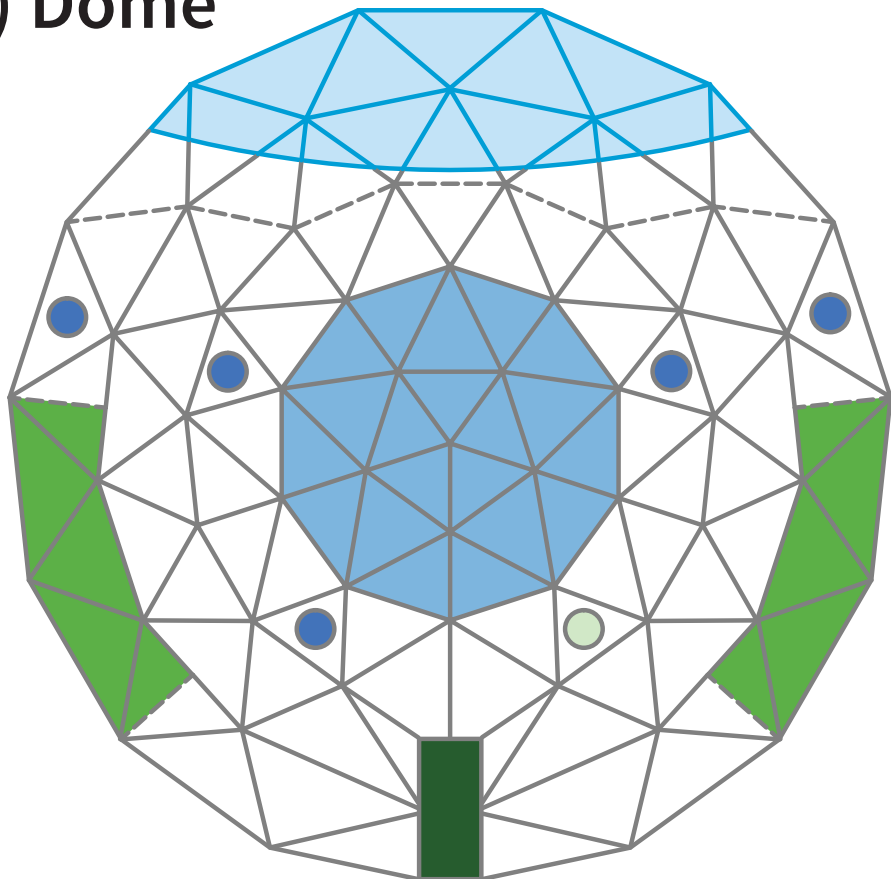
Windows: 6 round removable windows (2ft. / .6 meter diameter)

Ventilation: 2 ventilation roll-ups with zippers

Anchoring: Hardware for any type of surface

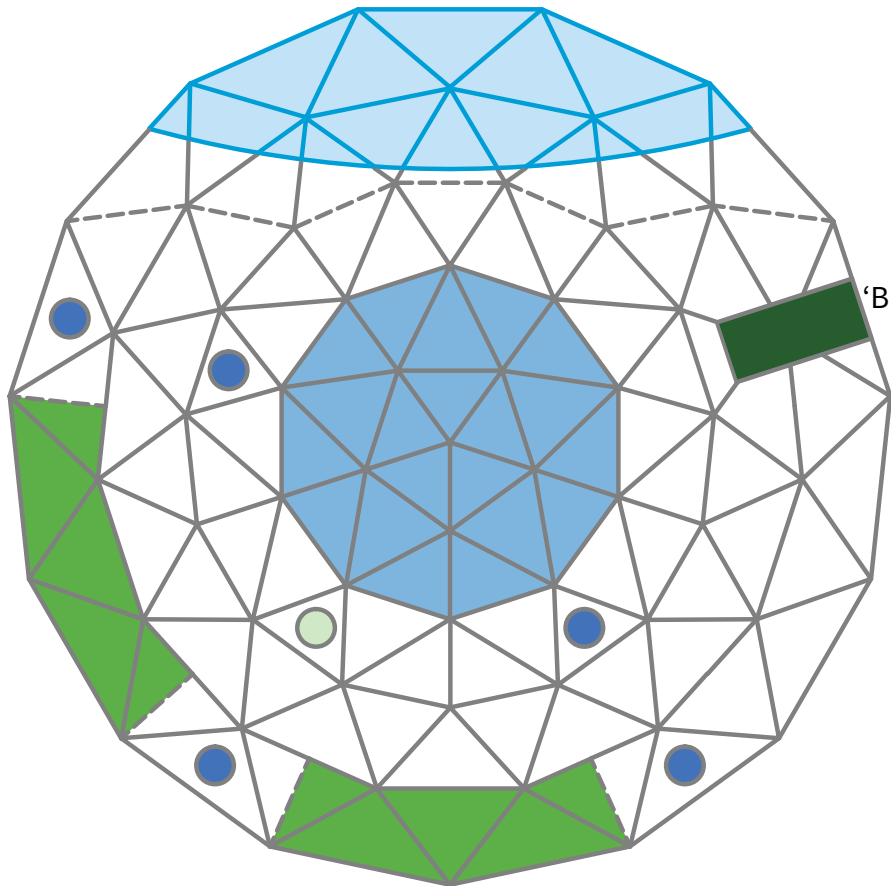
Instructions: Dome care & assembly manual

24ft (7m) Dome

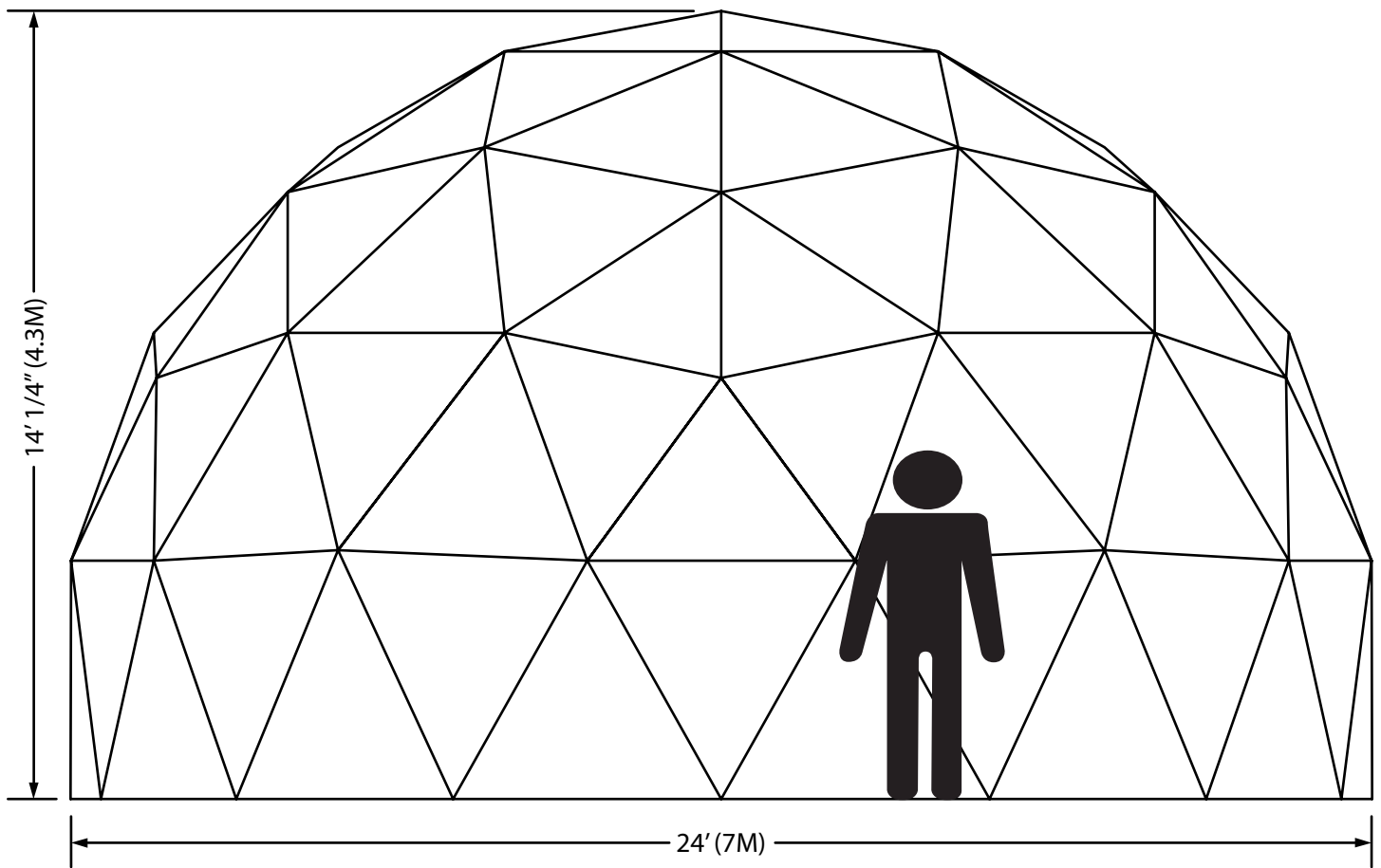


'A' Door Location

- Bay Window (zip-off)
- Zip-Off Roof (optional)
- Windows (optional screens)
- Door Frame (optional diamond door)
- Base Roll-Up (optional base screen)
- Stove Vent or Solar Fan (optional)



'B' Door Location



24' Dome Elevation



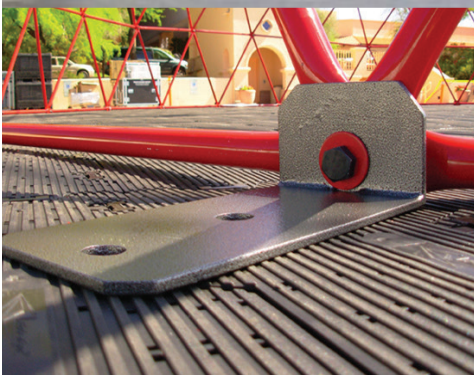
Dome Covers

Our covers are made of a 20 year longevity, architectural fabric that is durable, flame retardant, water and mildew resistant with special UV shielding. Our environmental resistant fabric will provide a lasting shelter in all climates, from tropical beaches to snowy mountains, from wind-swept deserts to humid Rainforests.



Dome Frames

Sturdy Frames: Our geodesic frames are architecturally engineered with galvanized steel tubing to be both durable and strong. Our rust resistant frames can endure heavy snow loads, tropical rains, and hurricane winds up to 100 mph. Dome frames that are intended for areas with extreme weather conditions are customized by our engineering team to ensure enduring structural integrity.



Anchoring: Pacific Domes will supply the appropriate anchors to secure the dome frame to surfaces such as concrete, earth, asphalt, or a deck.



Portability: Our frames arrive in small bundles for easy counting and handling. We provide illustrations and instructions for easy frame assembly. Our staff can provide on site training.



Powder Coating: We offer the option to apply an extra-protective coating to your steel frame. There are many colors to choose from to enhance both the beauty and durability of your frame.

Dome Floors

We provide various free deck plans to add a cozy feel to your dome home. We offer three different deck plans: Portable Mandala, Stationary Joist, and Perimeter Board. An energy-efficient radiant heating and cooling system can be installed in the floor.



Portable Mandala:
The initial intricate construction of the mandala floor allows for effortless assembly. This method enables assembly of the floor and disassembly under 12 hours.

Stationary Joist:
We recommend a joist deck for people that don't expect to move their domes. This is the quickest and easiest method but it does not enable mobility.

Perimeter Board: For domes with earthen floors, we recommend perimeter board. The perimeter board will anchor your dome and keep the fabric off the ground. It can also be used as a mold to lay tiles or pour concrete.

Interior Design

The open floor plan and high ceilings of the geodesic dome create a beautiful space for interior design. Add internal construction to separate living spaces or work with the existing shape to create an open interior. Second story structures and lofts can be added to any dome 20' or larger.



Windows

From the deserts of New Mexico to the high mountains of the Swiss Alps, the elegant windows of our domes bring you closer to the surrounding nature. Sun-filled by day and star-lit by night, the dome's open design creates a naturally luminous environment.



Round Windows: Our removable round windows are made with clear marine vinyl and are extremely durable. They are included with every dome, and interchangeable screens can be purchased.

Bay Window: Each dome is manufactured with an elegant and extremely durable bay window. The large window is made with marine vinyl and zips into the dome skin, allowing the interior of the dome to be illuminated with natural lighting.

Skylight: Our Optional skylight are an upgrade, made of UV resistant clear vinyl, zips in, replacing the roof of any size dome. It allows a wealth of additional light into the dome.

Doors



Zipper Door: Our convenient fabric zipper door can be zipped open or closed from inside or outside.



Prehung Door: Our prehung door allows for a standard single or double door.



Heating

The dome's natural structure allows for constant airflow, requiring 30% less energy to circulate air, maintaining moderate air temperatures. We provide several options to transform your dome into a cozy refuge in the harshest winter climates.



Winter Liners: Our winter liners are flame retardant and resistant to mold and mildew. Providing insulation between you and the outside world, the window layout is Velcroed in to match the outer cover.

Thermo-Shield: Heat can be reflected back into the dome with a Thermo-Shield coating, cutting utility use by up to 40 percent. This non-toxic elastomeric paint containing ceramic microspheres can be used in colder climates.

Wood Stove: Each dome comes with an optional stove vent flashing and cap for wood stove installation. Comfortable temperatures can be maintained inside the dome while snow storms flurry outside.

Cooling

Each dome is designed for maximum ventilation, letting the cool breeze flow through the shade of the dome.



Solar Fan: Powered by the sun, our technically advanced Solar Fan is an environmentally friendly ventilation solution that will control humidity and temperature. It installs in under 30 minutes.



Thermoshield Paint: In warmer climates, coating the outside of the dome reflects over 90% of UV rays off the cover, keeping it cooler inside. Thermoshield also protects the fabric from UV, extending the life of your cover.



Ventilation: Screens are available for ventilation. Each round window can be removed and the base of the dome rolls up to allow cross ventilation. The roof can also be zipped out for added air flow.

Why Geodesic Domes?

Domes are nature's own geometry and provide a unique environment for every use. Since 1980, Pacific Domes has perfected the function and beauty of portable Geodesic Domes. We combine the sacred geometry developed by R. Buckminster Fuller with our progressively designed covers to bring you this futuristic structure.

- Energy Efficient
- Easy to Assemble
- Portable
- Structurally Sound
- Holds Heavy Snow Loads
- Handles High Winds





Dome Uses

- Family Dwellings
- Art Studios
- Yoga Studios
- Guest Housing
- Dance Space
- Spas & Pools
- Eco-villages
- Workshops
- Biodomes





“You do not need to struggle to change an old paradigm. Just create a new model and make the old one obsolete.”

— R. Buckminster Fuller



© All rights reserved.
Pacific Domes International, Inc.



PacificDomes.com | info@pacificdomes.com | 541-488-7737